

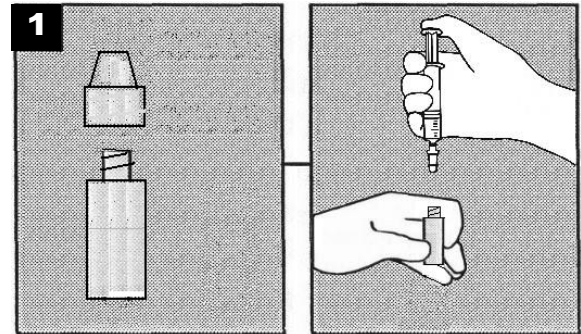
Domoic Acid User Guide

Detection Kit for Field Use – Page 1

1. DILUTE SAMPLE EXTRACT

Unscrew the Dropper Cap from the SAMPLE DILUTION BUFFER bottle. Do not spill the contents inside the bottle.

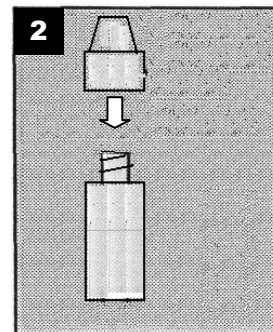
Add **SIX** drops (180 μ L) of the filtered sample extract to the SAMPLE DILUTION BUFFER bottle.



2. ADD DROPPER CAP AND MIX

Screw the Dropper Cap into the top of the SAMPLE DILUTION BUFFER bottle.

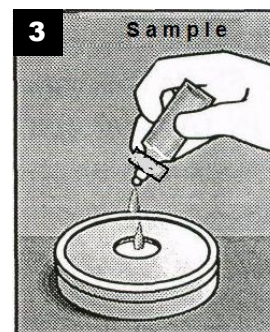
Gently shake the bottle until the contents are thoroughly mixed.



3. ADD SOLUTION TO SPOT PAD

Add **SIX** drops from the SAMPLE DILUTION BUFFER bottle onto the membrane in the center of the SPOT PAD.

Allow the drops to be completely absorbed by the pad.



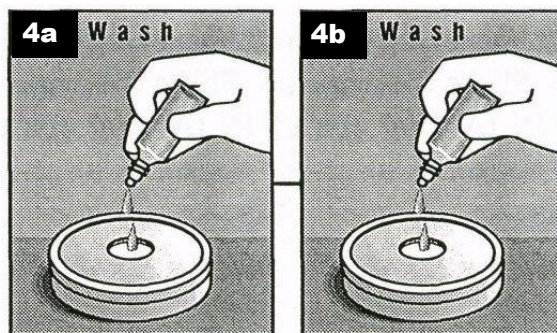
Domoic Acid User Guide

Detection Kit for Field Use – Page 2

4. WASH THE SPOT PAD

(a) Add **SIX** drops of the WASH solution onto the Domoic Acid SPOT PAD. Allow the drops to be completely absorbed by the pad.

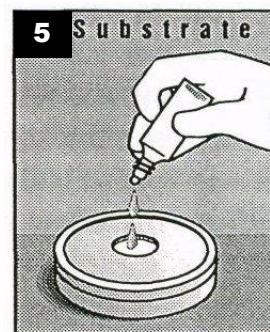
(b) Repeat part (a). (Use a total of **TWELVE** drops of WASH solution.)



5. ADD SUBSTRATE

Add **SIX** drops of the SUBSTRATE solution onto the SPOT PAD.

Wait ten to twenty minutes for a color pattern to develop.



6. OBSERVE COLOR PATTERN

Compare the pattern that develops on the Domoic Acid SPOT PAD sample with the reference chart in this User Guide.

Determine which pattern most closely matches the test result to estimate the concentration of Domoic Acid in the sample. (See examples shown below.)

